



**Scheda tecnica indumento/Garment technical data sheet. 8820NB.00**


Identificazione articolo/Item identification					
Cod. comm.le Industrial Starter/ IS commercial item code:	<b>8820NB</b>	Cod. art. fornitore/ Supplier item code*:	<b>8820NB</b>	Cod. fornitore/ Supplier code:	<b>101472</b>
Cod. colore Industrial Starter/ Industrial Starter colour code:	<b>040</b>	<input checked="" type="checkbox"/>	Articolo del catalogo/Item from catalogue		
	( blu marino – nero / blue navy – black )	<input type="checkbox"/>	Articolo personalizzato/Customized item		
	<b>078</b>	Codice cliente/Customer code:		<b>N/A</b>	
	( grigio chiaro - nero/light grey – black)				
Nome articolo/Item name:	<b>T Shirt "EXTREME" / "EXTREME" T Shirt</b>				

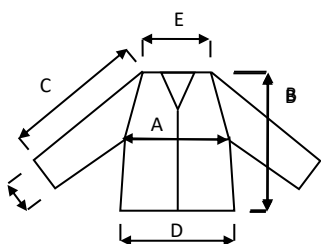
Descrizione tecnica dell'articolo/Technical item description			
	Composizione/ Fabric composition	Colore/colour (Pantone)	Peso del tessuto/ Fabric weight [g/m <sup>2</sup> ]
Tessuto principale/ Shell main fabric:	<b>100% cotone stretch meccanico / 100% mechanical stretch cotton</b>	<b>Blu marino &amp; Nero / Grigio chiaro &amp; Nero</b>	<b>160 +/- 5%</b>
Accessori/Accessories:	<b>Inserti in cordura ( spalle), taschino frontale / ( shoulder) cordura inserts, chest pocket</b>		
Loghi e ricami/ Logos & embroideries:			
Taglie/Sizes:	<b>S, M, L, XL, XXL, XXXL</b>		
Imballo/Packages:	<b>n. 1 pz per paper box – n. 20 paper box per cartone / n. 1 piece per paper box - n. 20 paper boxes per export carton</b>		
Istruzioni lavaggio/Care label:			

Conformità alle norme CE/Conformity with EC standards		
Cat.DPI/ PPE Category:	<b>I</b>	Norme CE e livelli di protezione/ EC standards and protection levels:
		<b>EN ISO 13688:2013</b> <b>( Rif . Certificate no: 21CR00188 by RITEX *)</b> <b>*Accredia Lab n. 0315 L</b>
Lingue nota Informativa/ Manufacturer's notes languages:	<b>IT,ES,CZ,PL,EN,PT,SK,HU,FR,DE,LT,RS,GR,SI,LV,HR,EE,TR,RO</b>	

## Scheda tecnica indumento/Garment technical data sheet. 8820NB.00

Taglia/Size:	Misure delle taglie/ Size measurements [cm]					
	S	M	L	XL	XXL	XXXL
A. Torace/Chest:	102	106	110	114	118	122
B. Lunghezza tot./Back lenght:	69	71	73	75	77	79
C. Manica/Sleeve:	17,5	19	20,5	22	23,5	25
D. Fondo/Bottom:	98	102	106	110	114	118
E. Spalla /Shoulder:	43,5	45	46,5	48	49,5	51

### Disegno e foto/Drawing and photo



Vicenza, 10/03/2022



Resp. acquisti/Purchasing manager